

North Newbald groundwater monitoring

Long-term monitoring borehole – Newbald Lodge

Groundwater levels within Yorkshire’s Principal Aquifers are monitored via a set of key monitoring boreholes. The Newbald Lodge borehole monitors the Chalk aquifer underlying North Newbald.

Figure 1 shows monthly groundwater levels at Newbald Lodge over the last two years relative the typical monthly levels (calculated based on data between 1979 to 2022). It shows that the levels have been ‘exceptionally high’ since October 2023, and levels haven’t been ‘normal’ since July 2023.

Figure 2 shows daily mean groundwater levels at Newbald Lodge over the last two years, along with daily river levels and rainfall. It shows that recent heavy rainfall has caused the levels in both groundwater and surface water to be very high relative to the rest of this period.

Figure 1 – Monthly groundwater levels at Newbald Lodge relative to long-term trends

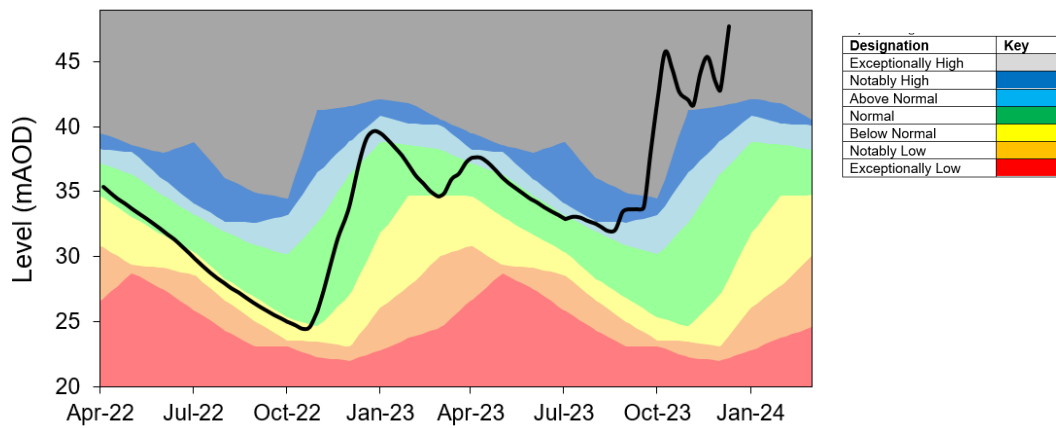


Figure 2 - Groundwater levels at Newbald Lodge against river level and rainfall

